

## **EM Board Review**

### **EMR Long Track**

**August 22-26, 2011**

**September 19-23, 2011**

A five-day comprehensive, academic review for emergency physicians preparing for the Qualifying Exam, ConCert Exam or continuous certification.

### **EMR Fast Facts & Fundamentals**

**September 24-26, 2011**

A three-day, short, academically comprehensive review of critical information for the emergency medicine board exam.

### **Location**

**Renaissance Columbus Hotel  
Columbus, Ohio**

### **EMR registrants will receive at no additional charge:**

- **An extensive syllabus**
- **45-day access to online visual stimuli**
- **A copy of ECGs for the Emergency Physician by Drs. Amal Mattu and William Brady**
- **Pre, Post and Daily Tests**
- **A link to Pharmacology/ Toxicology Case Studies by Ohio ACEP**



# **Emergency Medicine Review Course 2011**

**"The Gold Standard...  
the most thorough and  
complete course, leaves  
nothing to chance when it  
comes to passing the exam."**

**– Dr. Amal Mattu**

*"If you want  
to pass the  
Boards, this is  
THE course to  
take!"*

*– 2010 attendee*

**Look inside  
for course perks  
included with  
registration!**

**Register Online at**

**[www.ohacep.org/emergencymedicinereview](http://www.ohacep.org/emergencymedicinereview)**

**Phone: 614-792-6506 or 888-642-2374**

**Fax: 614-792-6508**

**E-mail: [ohacep@ohacep.org](mailto:ohacep@ohacep.org)**

# WHAT'S INCLUDED WITH REGISTRATION?



*"The value for what you pay is excellent. I will return in the future."*

- 2009 attendee



*"I took your course and I passed it on the first try. Enough said."*

- 2010 attendee



*"A great course, lots of information, good presentations... Ohio ACEP does it right."*

- 2010 attendee



## COURSE MATERIAL

- An extensive Course Syllabus for each day
- A copy of *ECGs for the Emergency Physician* by Drs. Amal Mattu and William Brady
- Complimentary link to *Pharmacology/Toxicology Case Studies* by Ohio ACEP

## PRE, POST & DAILY TESTS

- A pre-test of over 150 multiple choice questions will be sent with every registration confirmation
- Topic-specific questions for each lecture
- 30-40 test questions review the targeted course material covered each day
- A post-test with more than 100 questions

## X-RAY, STIMULI & COMPUTER ROOMS

- Access your complimentary e-learning subscription in the computer room or with wireless access in the hotel. We encourage you to bring your laptop with wireless capability.
- Full size adult and pediatric x-rays may be viewed to elevate interpretation
- Stimuli patient photos will also be displayed in study rooms

## E-LEARNING WEB SITE

- Registrants receive **complimentary** 45-day access to Ohio ACEP's e-learning Web site, [www.ohacep-elearning.org](http://www.ohacep-elearning.org).
- E-learning is a supplemental resource featuring over 1400 cases available 24 hours a day, 7 days a week
- Participants will have unlimited access to photos and radiographs with questions and extensive answers covering core content topics

## VIDEO SUPPLEMENTATION

- Video viewing rooms are available 24-hours a day
- Videos are also shown after lectures each evening on closed circuit TV for hotel guests

*All videos have been authored and produced by Emergency Medicine physicians.*

## Lectures

*Nationally-known faculty provide in-depth reviews of targeted areas and insight into clinical controversies*

- A complimentary continental breakfast will be available to those registrants staying at the Renaissance
- A complimentary evening reception will also be provided to registrants on select days. Convenient lunch options will be available for purchase daily.



## DATES TO REMEMBER

**EMCC ConCert Exam**

**October 3-8, 2011**

**Qualifying Exam**

**November 7-12, 2011**

# 2011 AGENDAS Emergency Medicine Review Course

## Long Track Schedule

### Day 1

#### 7 - 8 am Registration

Orientation  
Test Taking Psychology  
Traumatic Disorders  
Traumatic Disorders C-Spine  
Ultrasound in EM  
Hand Injuries  
Psychobehavioral Disorders  
Environmental Emergencies I  
Environmental Emergencies II  
Upper Extremity MS Injuries  
Rapid Review I

#### 6:30 pm - Lectures End

### Day 2

#### 7:30 am - Lectures Begin

Pediatric Medical Illnesses I  
Pediatric Medical Illnesses II  
Pediatric Surgical Illnesses  
Pediatric Rapid Review II  
Oncologic Emergencies  
Musculoskeletal Illnesses I  
Musculoskeletal Illnesses II  
Pregnancy and Urogenital Disorders  
Rapid Review III

#### 5:45 pm - Lectures End

### Day 3

#### 7:30 am - Lectures Begin

Toxicologic Emergencies I  
Toxicologic Emergencies II  
Renal/GU Emergencies  
Toxicologic Emergencies III  
Toxicology Rapid Review IV  
Hematologic Disorders  
Clinical Pharmacology I  
Clinical Pharmacology II  
EMS, ED Admin. & Patient Safety  
Rapid Review V

#### 6:10 pm - Lectures End

### Day 4

#### 7:30 am - Lectures Begin

Thoracic Respiratory Disorders I  
Thoracic Respiratory Disorders II  
Infectious Disorders I  
Thoracic Respiratory Disorders III  
Infectious Disorders II  
Endocrine, Metabolic & Nutritional Disorders I  
Endocrine, Metabolic & Nutritional Disorders II  
Cardiovascular Disorders I  
Cardiovascular Disorders II  
Ocular Emergencies  
ECG Review

#### 7 pm - Lectures End

### Day 5

#### 7:30 am - Lectures Begin

Nervous System Disorders  
Abdominal & Gastrointestinal Disorders I  
Abdominal & Gastrointestinal Disorders II  
Cutaneous Disorders I  
Cutaneous Disorders II  
Cardiovascular Disorders III  
Cardiovascular Disorders IV  
Geriatrics  
Pelvic, Back & Lower Extremity Musculoskeletal Injuries  
Ear, Nose, Throat & Dental

#### 6:25 pm - Course Ends

*"Everyone knows this is the best board review."*

*- 2010 attendee*

## Fast Facts & Fundamentals Schedule

### Day 1

#### 7 - 8 am Registration

Orientation  
Trauma Critical Facts  
Cardiology Pearls  
GI/OB-Gyn Essentials  
Orthopedic Critical Facts  
Respiratory/Neurology Pearls  
Rapid Review

#### 6:00 pm - Lectures End

### Day 2

#### 8 am - Lectures Begin

Rapid Pictorial Review (Derm & Ophth)  
Toxicology Essentials  
Environmental Essentials  
EMS, ED Admin. & Patient Safety  
Rapid Review (ID, Endocrine, Hem, Onc)  
ENT Essentials  
Rapid Review

#### 5:45 pm - Lectures End

### Day 3

#### 8 am - Lectures Begin

Rapid Review (Psych, Geriatrics)  
Pediatric Review  
GU/Renal Essentials  
Clinical Procedures  
Rapid Review

#### 4 pm - Course Ends

*"A wonderful course! Between the lectures, TV videos, and the lab room you have maximized the students' ability to learn the most possible material in the shortest period of time."*

*- 2010 attendee*

*Programs and times are subject to change.*



## CME Approval – Long Track 73 and Fast Facts & Fundamentals 41.5

This activity has been planned and implemented in accordance with the Essential Areas and Policies for the Accreditation Council of Continuing Medical Education through joint sponsorship of the American

College of Emergency Physicians and Ohio ACEP.

The American College of Emergency Physicians is accredited by the Accreditation Council for Continuing Medical Education to provide continuing

medical education for physicians.

The American College of Emergency Physicians designates this live activity for a maximum of 73 (Long Track)/41.5 (FF&F) AMA PRA Category 1 Credits™. Physicians should claim only the

credits commensurate with their participation in the activity.

Approved by the American College of Emergency Physicians for a maximum of 73 (Long Track)/41.5 (FF&F) hours of ACEP Category I credit.

### Disclaimer

The Ohio Chapter of the American College of Emergency Physicians makes every effort to ensure that the speakers at Chapter-sponsored courses are knowledgeable authorities in their field. Course attendees are nevertheless advised that the statements and opinions expressed by course speakers are those of the speakers, not of the Ohio Chapter ACEP.

The speakers' statements and/or opinions should not be construed as Ohio Chapter ACEP policy or recommendations, and the Ohio Chapter ACEP disclaims any liability or responsibility for the consequences of any actions taken in reliance upon those statements or opinions. Products/services exhibited by companies or organizations other than the Ohio Chapter ACEP are not endorsed by the Chapter.

Further, the Ohio Chapter ACEP disclaims any liability or responsibility for the professional or personal use of such products/services. Speakers and times are subject to change without notice and at our discretion. Ohio ACEP is not affiliated with ABEM.

Due to the nature of this course, we can not allow children and other guests in the lecture hall, video or computer rooms. No exceptions can be made.

# EMERGENCY MEDICINE REVIEW COURSE



## DOWNTOWN LOCATION!

### RENAISSANCE COLUMBUS HOTEL

50 N. Third Street  
Columbus, OH 43215

### Reservations

614-228-5050 or 800-266-9432  
Please be sure to mention Ohio Chapter ACEP  
when making your reservation.

## August Course Accommodations:

**Group Rate Reservation Deadline**  
**July 29, 2011**

### Register Online

<https://resweb.passkey.com/go/OhACEP0811EMR>

### Room Rate

**\$135** (Applicable taxes will apply)

### Overnight Parking

**\$10** (one vehicle per room)

## September Course Accommodations:

**Group Rate Reservation Deadline**  
**August 29, 2011**

### Register Online

<https://resweb.passkey.com/go/OhACEP0911EMR>

### Room Rate

**\$135** (Applicable taxes will apply)

### Overnight Parking

**\$10** (one vehicle per room)

Bed types are not guaranteed and are based on availability. All reservations must be accompanied by a first night deposit or guaranteed with a major credit card.

- Check-in time after 3 pm Check-out time is 12 pm
- Cancellation or modification of reservation must be made at least 48 hours prior to arrival to avoid forfeiture of deposit.
- Registrants are responsible for guaranteeing rooms for late arrival.

**FREE WIRELESS Internet in your sleeping room!**

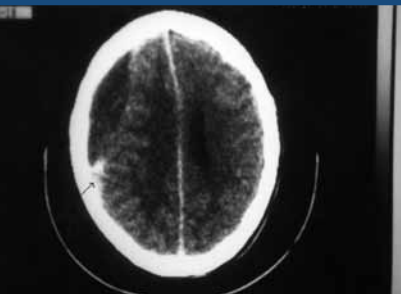
*"The best review course I've attended by far! Lectures were comprehensive and interesting. The overall setting and availability of stimuli, etc. completed the overall education experience. Thank You!"*

*– past attendee*



*"Overall Excellent! Love the 45-day access to study."*

*– past attendee*



## Travel Tip:

If you plan on flying to Columbus, Ohio the Port Columbus International Airport (Airport code – CMH) is the closest airport. [www.port-columbus.com](http://www.port-columbus.com)

# EMERGENCY MEDICINE REVIEW COURSE

## EMR Long Track

August 22-26, 2011  
September 19-23, 2011

## EMR Fast Facts & Fundamentals

September 24-26, 2011

## LLSA Fast Track

Saturday,  
September 24, 2011

## Renaissance Columbus Hotel

### Educational Objective

Long Track and Fast Facts registrants will comprehensively review the body of knowledge that comprises Emergency Medicine and recall information pertinent

to the practice of Emergency Medicine with the goal of passing the Emergency Medicine ConCert exam or Qualifying exam.

LLSA Fast Track is a one-stop, all-encompassing, rapid review and testing facility for all of your 2009, 2010, 2011 LLSA needs. Attendees will:

### What's the difference between Long Track and Fast Facts & Fundamentals?

Long Track is an immersive, comprehensive review of Emergency Medicine for physicians preparing for the ConCert or Qualifying exams. Fast Facts & Fundamentals (formerly Short Track) is a short, academically comprehensive review of Emergency Medicine for physicians preparing for the ConCert or Qualifying exams. Rapid review lectures focus on key facts and pearls of each topic. Fast Facts is a 3-day course offered after the 5-day Long Track course. Participants may attend Long Track, Fast Facts or both.

### EMR registrants will receive:

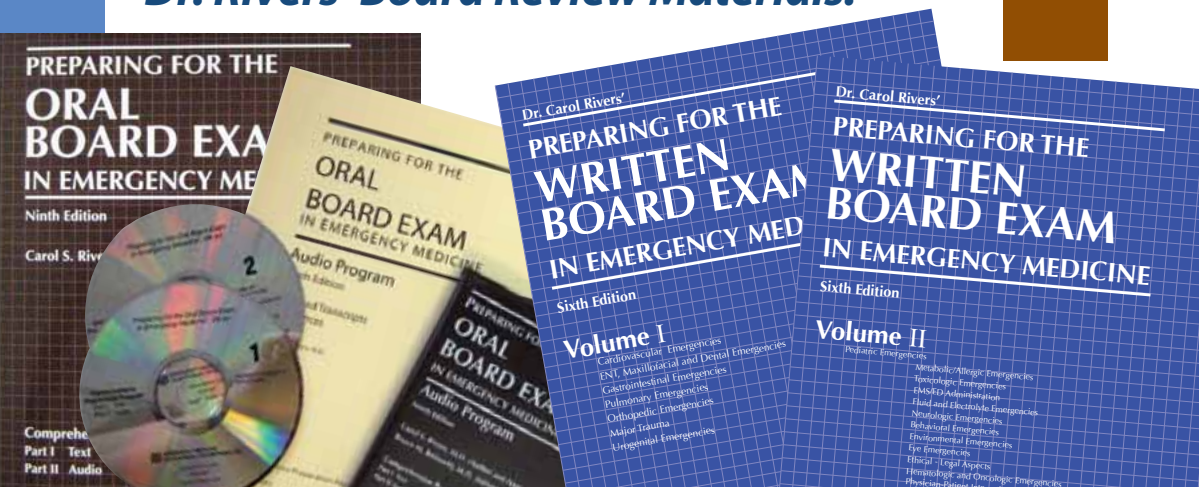
- An extensive syllabus
- Online visual stimuli access at [www.ohacep-elearning.org](http://www.ohacep-elearning.org)
- A copy of *ECGs for the Emergency Physician* by Drs. Amal Mattu and William Brady
- Pre, Post and Daily Tests
- A link to *Pharmacology/Toxicology Case Studies* by Ohio ACEP

- Participate in a moderated Q&A session
- Review article summaries (provided prior to the course)
- Review key facts pertinent to the successful completion of the exam
- Take the test on site

Participants must bring their own laptop computer with wireless capability in order to complete the test on site.

**Add on LLSA to your EMR registration for an additional fee. This course will be going on in conjunction with Fast Facts & Fundamentals on Saturday, September 24, 2011.**

### Supplement your Board Preparation with Dr. Rivers' Board Review Materials!



**If you require special assistance while attending our course, please contact Ohio ACEP.**

Available for purchase on site or available now at  
[www.ohacep.org/riversboardreviewproducts](http://www.ohacep.org/riversboardreviewproducts)

# FACULTY AND AFFILIATIONS

In accordance with ACCME Standard and ACEP policy, presenters must disclose the existence of significant financial interests in or relationships with manufacturers of commercial products that may have a direct interest in the subject matter of the presentation, and relationships with the commercial supporter of this CME activity. These presenters do not consider such relationships will influence their presentation. Complete disclosures will be made prior to the start of each course.

## EMR LONG TRACK AND FAST FACTS & FUNDAMENTALS SPEAKERS:

### James Augustine, MD, FACEP

Director of Clinical Operations, EMP, Canton, OH; Associate Clinical Professor, Wright State University Dept. of Emergency Medicine, Dayton, OH. **Lecture: EMS, ED Administration & Patient Safety**

### Robert Barish, MD, MBA, FACEP, FACP

Chancellor, Louisiana State University Health Sciences Center, Shreveport, LA. **Lecture: Ocular Emergencies**

### Mary Jo Bowman, MD, FAAP

Associate Professor of Clinical Pediatrics, The Ohio State University; Director of Pediatric Emergency Medicine Fellowship, Nationwide Children's Hospital; Attending Physician, Emergency Dept., Nationwide Children's Hospital, Columbus, OH. **Lectures: Environmental Emergencies I&II**

### Brian Browne, MD, FACEP

Professor of Emergency Medicine; Chair, Dept. of Emergency Medicine, University of Maryland, School of Medicine, Baltimore, MD. **Lectures: Cutaneous Disorders I&II**

### Ken Butler, DO, FACEP

Associate Professor of Emergency Medicine, Associate Residency Director, University of Maryland School of Medicine, Baltimore, MD. **Lectures: Pelvic, Back & Lower Extremity Musculoskeletal Injuries, Fast Facts Cardiology Pearls, Orthopedic Critical Facts, Respiratory/Neurology Pearls**

### Kevin Casey, DO, FACEP

Core Faculty, Conemaugh Memorial Emergency Medicine Residency, Johnstown, PA. **Lecture: Fast Facts Trauma Critical Facts**

### Paul De Saint Victor, MD, FACEP

Chief of Staff & Associate Director, Emergency Medicine Residency, St. Vincent Mercy Medical Center, Toledo, OH. **Lectures: Test Taking Psychology, Thoracic Respiratory Disorders I-III, Rapid Reviews, Fast Facts Reviews**

### Travis Eastin, MD

Assistant Professor, Clinical; Assistant Residency Director, Dept. of Emergency Medicine, The Ohio State University, Columbus, OH. **Lecture: Fast Facts GU/ Renal Essentials**

### David Effron, MD, FACEP

Assistant Professor, Case Western Reserve University; Attending Physician, Dept. of Emergency Medicine, MetroHealth Medical Center and Cleveland Clinic, Cleveland, OH. **Lecture: Fast Facts ENT Essentials**

### Emile El-Shammaa, MD

Clinical Assistant Professor, Dept. of Emergency Medicine, The Ohio State University, Columbus, OH. **Lecture: Fast Facts Clinical Procedures**

### Martin Hellman, MD, FACEP, FAAP

Attending Emergency Physician, Children's Hospital of Pittsburgh; Clinical Assistant Professor of Pediatrics, University of Pittsburgh, Pittsburgh, PA. **Lecture: Pediatric Medical Illnesses II**

### Fred Hustey, MD, FACEP

Staff Physician, The Cleveland Clinic; Assistant Professor, The Cleveland Clinic Lerner College of Medicine, Cleveland, OH. **Lectures: Endocrine, Metabolic and Nutritional Disorders I&II**

### Timothy Janz, MD, FACEP, FCCP

Critical Care Director, Wright State University; Professor, Emergency Medicine, Wright State University School of Medicine, Dayton, OH. **Lectures: Clinical Pharmacology I&II**

### Colin Kaide, MD, FACEP, FAAEM

Associate Professor of Emergency Medicine and Attending Physician of Emergency Medicine and Hyperbaric Medicine, The Ohio State University Medical Center, Columbus, OH. **Lectures: Hematologic Disorders, Renal/GU Emergencies**

### Randall King, MD, FACEP

Associate Chairman, Emergency/Trauma Dept., Emergency Medicine Residency Director, St. Vincent Medical Center, Toledo, OH. **Lectures: Traumatic Disorders C-Spine, Musculoskeletal Illnesses I&II, Rapid Reviews, Fast Facts Reviews**

### Nicholas Kman, MD

Emergency Medicine Clerkship Director, Assistant Professor of Emergency Medicine, The Ohio State University College of Medicine, Columbus, OH. **Lecture: Ear, Nose, Throat and Dental Disorders**

### Benjamin Lawner, DO

Attending Physician, Clinical Assistant Professor, Dept. of Emergency Medicine, University of Maryland School of Medicine; Deputy EMS Medical Director, Baltimore City Fire Dept., Baltimore, MD. **Lectures: Cardiovascular Disorders I-IV, ECG Review**

### Peter Listerman, MD, FACEP

Assistant Professor and Director of Emergency and Disaster Preparedness, Summa Health System, Akron City Hospital, Akron, OH. **Lecture: Fast Facts Environmental Essentials**

### Mimi Lu, MD

Clinical Assistant Professor of Emergency Medicine, University of Maryland School of Medicine, Baltimore, MD. **Lectures: Nervous System Disorders, Geriatrics**

### Sharon Mace, MD, FAAP, FACEP

Professor, Cleveland Clinic Lerner College of Medicine at Case Western Reserve University, Cleveland, OH. **Lectures: Pediatric Medical Illnesses I, Oncologic Emergencies**

### Joseph Martinez, MD, FACEP, FAAEM

Assistant Professor of Emergency Medicine; Assistant Dean for Student Affairs, University of Maryland School of Medicine, Baltimore, MD. **Lectures: Abdominal & Gastrointestinal Disorders I&II, Fast Facts GI/OB-GYN Essentials**

### Amal Mattu, MD, FACEP

Professor and Program Director, University of Maryland School of Medicine, Baltimore, MD. **Lectures: ECG Review, Cardiovascular Disorders I-IV, Geriatrics, Nervous System Disorders**

### Michael McCrea, MD, FAAEM

Attending Physician, Director of Medical Simulation, Emergency Medicine Residency, Mercy St. Vincent Medical Center, Toledo, OH. **Lecture: Fast Facts Toxicology Essentials**

### David Miramontes, MD, FACEP

Attending Emergency Physician, St. Vincent Mercy Medical Center; City of Toledo and Metro Toledo Area Fire-EMS Medical Director, Team Commander OH-1 Disaster Medical Assistance Team, Toledo, OH. **Lecture: Fast Facts EMS, ED Administration & Patient Safety**

### James Naprawa, MD

Associate Clinical Professor of Pediatrics, The Ohio State University College of Medicine; Attending Physician, Section of Emergency Medicine, Nationwide Children's Hospital, Columbus, OH. **Lecture: Pediatric Rapid Review**

### Kathryn Nuss, MD

Associate Director of Emergency Medicine, Operations Medical Director, Emergency Dept.; Associate Trauma Medical Director at Nationwide Children's Hospital; Associate Professor of Clinical Pediatrics at The Ohio State University College of Medicine, Columbus, OH. **Lecture: Pediatric Rapid Review**

### Michael Omori, MD, FACEP

Clinical Director, Pediatric Emergency Center, Mercy Children's Hospital and St. Vincent Mercy Medical Center; Clinical Assistant Professor, Dept. of Surgery, University of Toledo Medical Center, Toledo, OH. **Lectures: Infectious Disorders I&II**

### Jeffrey Pennington, MD

Program Director, Emergency Medicine, Dept. of Emergency Medicine, MetroHealth Medical Center, Cleveland, OH; Senior Instructor, Case Western Reserve University, Cleveland, OH. **Lecture: Pregnancy and Urogenital Disorders**

### Scott Polsky, MD, FACEP

St. Vincent Mercy Medical Center Emergency Dept., Toledo, OH; Premier Health Care. **Lectures: Hand Injuries, Psychobehavioral Disorders**

### Laura Sells, MD, FAAP, FACEP

Associate Professor of Pediatrics, Division of Emergency Medicine; Associate Director, Pediatric Residency Program, Primary Children's Hospital, The University of Utah, Salt Lake City, UT. **Lecture: Fast Facts Pediatric Review**

### Jerry Tasset, MD, PhD, FACEP

Chief Clinical Officer, Premier Health Care Services, Dayton, OH. **Lectures: Toxicologic Emergencies I – III, Toxicology Rapid Review**

### Nicole Wallis, MD

Staff, Dept. of Emergency Medicine, MetroHealth Medical Center; Section Director of Pediatric Emergency Medicine; Assistant Professor, Case Western Reserve University, Cleveland, OH. **Lecture: Pediatric Surgical Illnesses**

### Howard Werman, MD, FACEP

Professor of Emergency Medicine, The Ohio State University College of Medicine; Medical Director, MedFlight, Columbus, OH. **Lecture: Upper Extremity Musculoskeletal Injuries**

### Sandra Werner, MD, RDMS, FACEP

Associate Director, Emergency Medicine Residency Program, MetroHealth Medical Center; Assistant Professor, Case Western Reserve School of Medicine, Cleveland, OH. **Lectures: Traumatic Disorders, Ultrasound in Emergency Medicine**

# 2011 Emergency Medicine Review COURSE REGISTRATION FORM

**Printed Name**

Full name including credentials (for CME certificate and name tag) – MD, DO, FACEP, FACEOP

**Nickname**

(for name tag)

**Address**

**City**

**State**

**Zip**

**Home Phone ( )**

**Cell Phone ( )**

**E-mail**

Required

**Taking the course for:**

- Certification  
Year? \_\_\_\_\_
- Recertification  
Year? \_\_\_\_\_
- General Review

**When are you taking the test?**

- ConCert:  
Oct 3-8, 2011
- Qualifying:  
Nov 7-12, 2011
- I am not taking the exam in 2011
- Other \_\_\_\_\_

**How did you hear about the course?**

- Brochure
- Ohio ACEP Web site
- ACEP Web site
- Online Search
- Previously Attended
- Residency Program
- Colleague
- EMRA Web site
- E-mail Received
- Other

I am registering for AUGUST

**August EMR — Renaissance Columbus Hotel**

**Mark One:**

<b>Early Registration</b> (by June 6)	<b>Registration</b> (June 7 and after)
--	---

**Long Track Course**

- |   |       |        |
|---|-------|--------|
| <input type="checkbox"/> Ohio ACEP Member # _____                     | \$840 | \$890  |
| <input type="checkbox"/> ACEP Member # _____                          | \$915 | \$965  |
| <input type="checkbox"/> Non-ACEP Member                              | \$990 | \$1040 |
| <input type="checkbox"/> Resident*, PA/Nurse                          | \$770 | \$820  |
| <input type="checkbox"/> Power outlet for your laptop in lecture hall | \$50  | \$75   |

\* Letter from Residency Program Required

Refunds made up to 7/29/2011 upon written request less a \$150 administrative fee.



**Ohio Chapter ACEP**  
3510 Snouffer Road  
Suite 100  
Columbus, OH 43235

**E-mail:**  
ohacep@ohacep.org

**Online registration:**  
www.ohacep.org/emergencymedicinereview

**Ohio ACEP will e-mail a confirmation of registration to all participants.**

- If you prefer to receive the confirmation by U.S. mail, please check this box.

**Phone:**

(614) 792-6506

**Toll Free:**

(888) 642-2374

**Fax:** (614) 792-6508

I am registering for SEPTEMBER

**September EMR — Renaissance Columbus Hotel**

**Mark One:**

<b>Early Registration</b> (by July 6)	<b>Registration</b> (July 7 and after)
--	---

**Long Track Course**

- |   |       |        |
|---|-------|--------|
| <input type="checkbox"/> Ohio ACEP Member # _____                     | \$840 | \$890  |
| <input type="checkbox"/> ACEP Member # _____                          | \$915 | \$965  |
| <input type="checkbox"/> Non-ACEP Member                              | \$990 | \$1040 |
| <input type="checkbox"/> Resident*, PA/Nurse                          | \$770 | \$820  |
| <input type="checkbox"/> Power outlet for your laptop in lecture hall | \$50  | \$75   |

**Long Track & Fast Facts Combined - The Best Value!**

- |   |        |        |
|---|--------|--------|
| <input type="checkbox"/> Ohio ACEP Member # _____ | \$1120 | \$1170 |
| <input type="checkbox"/> ACEP Member # _____      | \$1195 | \$1245 |
| <input type="checkbox"/> Non-ACEP Member          | \$1270 | \$1320 |
| <input type="checkbox"/> Resident*, PA/Nurse      | \$1050 | \$1100 |

**Fast Facts & Fundamentals**

- |   |       |       |
|---|-------|-------|
| <input type="checkbox"/> Ohio ACEP Member # _____ | \$490 | \$540 |
| <input type="checkbox"/> ACEP Member # _____      | \$540 | \$590 |
| <input type="checkbox"/> Non-ACEP Member          | \$615 | \$665 |
| <input type="checkbox"/> Resident*, PA/Nurse      | \$420 | \$470 |

**LLSA Fast Track - September 24**

- Receive article summaries by  U.S. mail  E-mail
- |                                    |               |       |
|------------------------------------|---------------|-------|
| <input type="checkbox"/> 2009 LLSA | One Course    | \$150 |
| <input type="checkbox"/> 2010 LLSA | Two Courses   | \$275 |
| <input type="checkbox"/> 2011 LLSA | Three Courses | \$400 |

\* Letter from Residency Program Required

Refunds made up to 8/26/2011 upon written request less a \$150 administrative fee.

**Payment:** Guarantee to one of the following:

- Visa   
  Mastercard   
  AMEX   
  Check

**Name on Card**

**Card #**

**Exp. Date**

**Security Code**

\* Letter from residency director required. Must be a resident or fellow at the time of registration. All registrations must be accompanied by the full fee.

**Limited Registration! See inside for details!**

**EMR Long Track**  
August 22-26, 2011  
September 19-23, 2011

**EMR Fast Facts &  
Fundamentals**  
September 24-26, 2011

# 2011 Emergency Medicine Review Course

- Plan to attend this nationally-acclaimed emergency medicine board review course!
- Register online at [www.ohacep.org/emergencymedicinereview](http://www.ohacep.org/emergencymedicinereview)

Take  
advantage  
of early bird  
registration  
rates!



Ohio ACEP - Your Essential Resource for Emergency Medicine Review  
Visit us at [www.ohacep.org/emergencymedicinereview](http://www.ohacep.org/emergencymedicinereview)



3510 Snuffer Road, Suite 100  
Columbus, OH 43235